



DEVELOPMENT WORK ON THE LIÈGE TRILOGI PORT MULTIMODAL PLATFORM STARTS ON 28 JUNE 2013!

Development work on the Liège Trilogiport multimodal platform, one of the 32 port areas managed by Liège Port Authority and located along the Albert Canal in Hermales-sous-Argenteau, will start on 28 June 2013.

The construction will last 2 years. The Trilogiport multimodal platform (120 ha) will be operational in the second half of 2015.

Liège Trilogiport will enable:

- increasing the Walloon potential for movement by waterway;
- accommodating dynamic investors;
- the creation of 2,000 new jobs;
- participation in regional sustainable development efforts through an intensification of the proportion of tonnage transported by road to the greener waterway route, a mode that protects the environment more as well as relieving the road network.

This is a major project, both economically and environmentally. Its implementation allows one of the objectives of the Government expressed in its Regional Policy Statement to be fulfilled: *“to promote inter-network modality (linking river, rail and road) to ensure better mobility and territorial, economic, social and environmental coherence”*.

During the press conference, Willy Demeyer, President of Liège Port Authority and Mayor of Liège City welcomed this as a “*a milestone*” and “*a turning point for the Port of Liège*” but also for the economic redeployment of Liège. The project leaders also stressed the major implications of this multimodal platform for the economy of the region, which will create more than 2,000 direct and indirect jobs.

Emile-Louis Bertrand, Managing Director of Liège Port Authority stated that “*investments by national and international companies such as Euroports, Dubai Ports World, Deutsche Lagerhaus and Warehouses De Pauw confirm the position of the Port of Liège as an ideal hub for logistics and undoubtedly bring an international dimension to the region*”.

Liège Trilogiport multimodal platform is a project being carried out by Liège Port Authority, in close collaboration with the Directorate General for Waterways and Mobility of the Public Service of Wallonia (DGO 2). The latter is carrying out a technical assistance project for the Port of Liège for the construction and development of port areas (which includes the Liège Trilogiport).

The formal meeting was officially organised in the presence of Mr Willy Demeyer, President of Liège Port Authority and Mayor of the City of Liège, Ms Sylvianne Portugaels, Head of Cabinet of the Minister Jean-Claude Marcourt, Mr Antonio Di Carlo, Minister of Public Works, Agriculture, Rural Affairs, Nature, Forests and Heritage, Mr Philippe Henry, Minister of the Environment, Spatial Planning and Mobility and Mr Firket Michel, Administrateur délégué of Liège Port Authority of the Port of Liège and First Deputy Mayor of the City of Liège.

We also note the presence of political, institutional and economic players from the Province of Liège and Wallonia. Also present at this event are representatives of the Liège Trilogiport platform and representatives of Liège Port Authority's clients.



THE CONSTRUCTION WORK ON THE LIÈGE TRILOGI PORT PLATFORM

The construction work on the platform will take place in two phases:

PHASE 1: CONSTRUCTION AND DEVELOPMENT WORK ON THE LIÈGE TRILOGI PORT MULTIMODAL PLATFORM

Construction and development of the Liège Trilogiport multimodal platform work start on 28 June 2013 and will be carried out by the joint venture (consortium) of the companies ELOY - ERAERTS - KUMPEN.

In the first phase (end of June - beginning of July), the following operations will be completed:

- topographical surveys of the sites;
- clearance of the brush and undergrowth in the area;
- earthworks for the preparation of the container terminal;
- development of the area for the natterjack toads;
- start of the sewerage works.

The first vehicles will arrive on site in late June. The development work will be intensified starting in August.

The development work will take 12 months for the platform itself. The company has an additional period of four months to complete the roundabouts at the entrances to the platform. Work will therefore finish on 27th October 2014.

The amount of work totals 23,5 million euros (Phase 1).

This amount is financed by:

- Marshall 2.Green Plan (17,8 millions euros provided under the Marshall 2.Green Plan - 80 % and by Liege Port Authority - 20%)
- and by the European Regional Development Fund (ERDF) and Wallonia (+- 5,7 millions euros, among 40 % from European Union and 60 % from Wallonia).

PHASE 2: CONSTRUCTION AND DEVELOPMENT WORK ON THE BRIDGE AND ROAD CONNECTION BETWEEN THE E25 AND THE N618

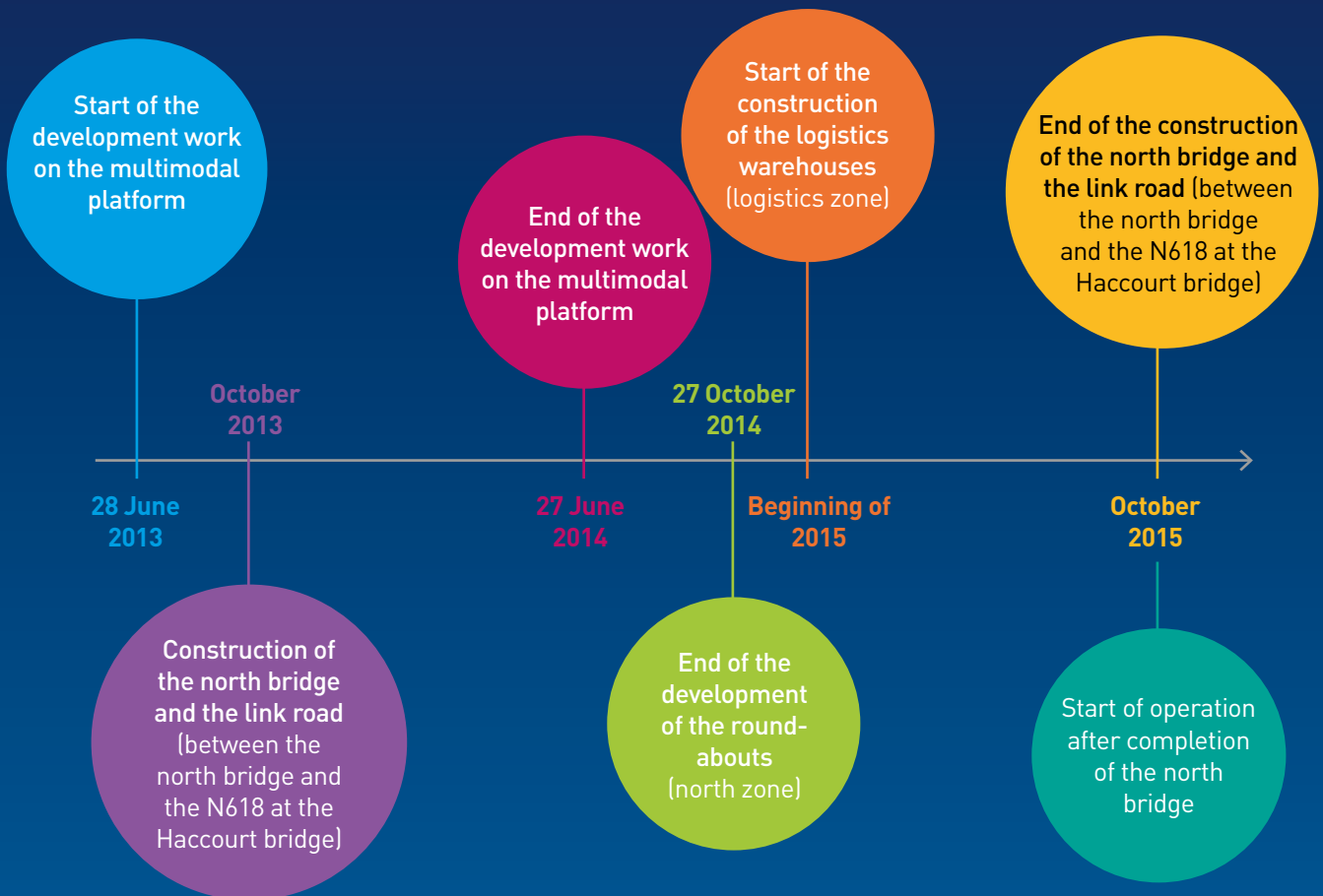
These development works on the North bridge and the N618 link road will start in October 2013 and will end in October 2015. The time required for completion is specified as 24 calendar months.

The amount of work totals 22 million euros (Phase 2).

This amount is financed by:

- the European Regional Development Fund (ERDF) (11 million euros, among 40 % from the European Union and 60 % from Wallonia)
- the General Directorate for Waterways and Mobility of the Wallonia Public Service (11 million euros).

LIEGE TRILOGIPORT CONSTRUCTION SITE AND A FEW KEY DATES



THE SITE: AS MUCH AS POSSIBLE BY WATERWAY!

In order to minimize any nuisance associated with the development of the Liège Trilogiport multimodal platform, project leaders are committed to giving precedence to transporting the materials by water. According to Yvon Loyaerts, Director-General, General Directorate for Waterways and Mobility of the Wallonia Public Service (SPW – DGO 2) : *“So, 95% of the construction materials required will be transported via the Albert Canal. The number of trucks associated with Liège Trilogiport site will be very small in comparison to its size. An average of two construction site trucks per day is expected.”*



A PROJECT IN HARMONY WITH THE ENVIRONMENT A WILLINGNESS FOR OPTIMAL INTEGRATION : 39 HA !

A comprehensive discussion of the urban development of the area was conducted so that the project is integrated as well as possible between the Albert Canal and the village of Hermalle-sous-Argenteau. Of the 120 ha planned, nearly 40 hectares (39 acres more precisely, almost 1/3) will be devoted to this area of environmental integration, which will encircle the platform and beautify the access to the north bridge.

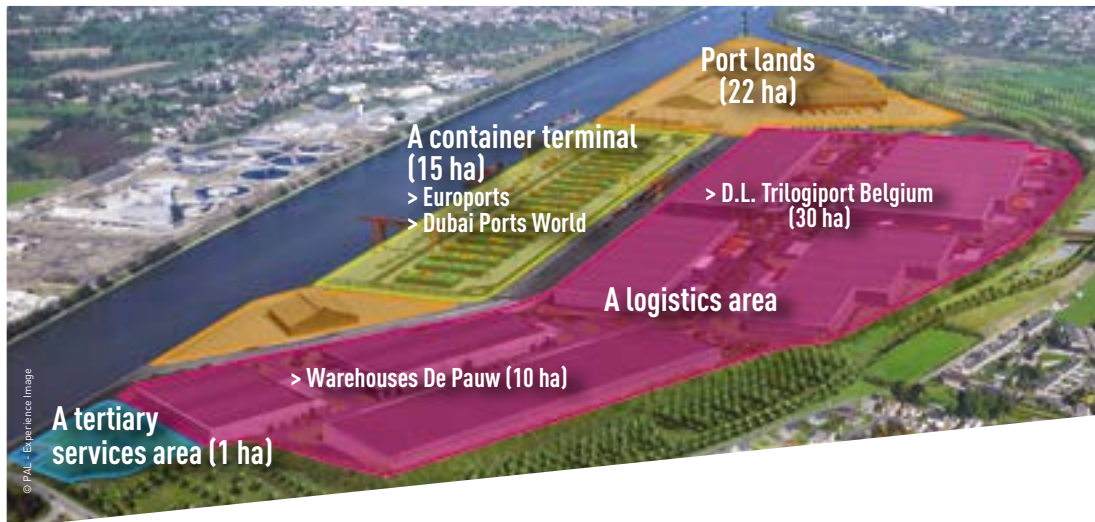
The result of continuing consultation and constructive dialogue with the representatives of the Hermalle-sous-Argenteau Village Committee, the large environmental integration zone (39 hectares in total) will satisfy:

- the local residents by the creation of orchards and community gardens;
- fishermen thanks to pontoons specially created for fishing;
- walkers and cyclists due to paths dedicated to the soft modes of transport (RAVeL);
- nature lovers thanks to bodies of water with a walkway and a 4 hectare wooded area;
- natterjack toads, which will have a place to live there;
- and the local flora and fauna!

Emile-Louis Bertrand, Director-General of Liège Port Authority, explains: *“All of these features are aimed at the optimal integration of the platform planned in Hermalle-sous-Argenteau. This vast environmental integration area will occupy more than 30% of the total area of the Liège Trilogiport. We hope to provide a friendly and pleasant space in order to optimise the integration of the platform with its environment and to reconcile the economy with the well-being of citizens.”*

Participation in the Connecting Citizen Ports 21 project enables European funding (Interreg IVB) to be obtained for the completion of part of this welcome zone.

LIÈGE TRILOGIPORT, A MULTIMODAL PLATFORM (120 HA) THAT IS UNIQUE IN EUROPE



A container terminal (15 ha)

Located along the Albert canal, the container terminal will be earmarked for vessel loading and unloading activities. The stored containers are to be transferred to trucks, goods wagons or barges heading for various destinations in Europe, or deposited in the logistical stores available in European distribution centres to be processed and then reshipped.

The container terminal will be managed by Trilogiport Terminal SA (consortium between Euroports / Dubai Ports World).

A logistics area (41.7 ha)

Liège Trilogiport will house a logistical area, located at the rear of the container terminal, serving European distributions centres. Companies will use this area to provide added value to goods transported in containers. These state-of-the-art logistical halls will be where the goods are stored, processed, repacked and reorganised before being sent to various European destinations by waterway, rail or road.

This logistics zone will be managed partly by D.L. Trilogiport Belgium (30 hectares) and by Warehouses De Pauw (10 hectares).

Port lands (22 ha)

In common with the container terminal, this area offers the advantage of direct access to the Albert canal, so port economic activities can be developed.

A tertiary services area (1 ha)

This area will accommodate the specific tertiary services (offices, customers ...) required for the platform's economic development.

An environmental integration area (39 ha)

Special attention has been paid to the way the landscape and the environmental integration area is designed. Keen to ensure the well-being of all citizens Liège Port Authority and the Wallonia Public Service are committed to earmarking over 39 hectares for this area: one-third of the Liège Trilogiport's total surface area. The area will feature green spaces, community gardens and areas for walking...

LIÈGE TRILOGIPORT, A UNIQUE MULTIMODAL PLATFORM (120 HA) IN EUROPE

Liège Trilogiport primarily seeks to act as a powerful draw for companies using the waterways and major distribution centres in Europe offering high value-adding and job creation opportunities.

Liège Trilogiport has innumerable qualities:

- It is of key importance for the future of the Liège region and Wallonia
- It provides job-creating opportunities: 2,000 jobs (according to a survey conducted by the Directorate for the Promotion of Inland Waterways and Intermodal Transport (SPW - DPVNI) and confirmed by Logistics in Wallonia).
- It is environmentally-friendly and citizen-friendly
- It provides an opportunity to cater for economic, environmental and welfare-related concerns..

The main assets of the Liège Trilogiport:

- Multimodal area of 120 hectares downstream of Liège on the right bank of the Albert canal near the borders of Germany and the Netherlands;
- Located 14 hours away from the Antwerp shipping route and 24 hours from that of Rotterdam;
- Permissible draft: 3.40 m;
- Proximity to Liège Airport (7th largest European airport for freight) and the HST railways station in Liège;
- 56 million inhabitants within a radius of 250 km;
- 60 % of European purchasing power within a radius of 500 km;
- A project fundamental to the future of Wallonia and Liège, Liège Trilogiport is essential for the economic restructuring of Liège.

Liège, the leading logistics region in Europe!

According to a survey conducted by Cushman & Wakefield – real estate consultants – focused on the best European logistical and distribution sites, Liège is the leading logistics region in Europe! This survey undoubtedly lends support to the Liège Trilogiport development process.





BUDGET

The investment required for the development of the Liège Trilogiport platform and its road and rail access is estimated at nearly **EUR 45 million**.

The amount from private investment totalled **EUR 115 million**.

CITIZEN COMMUNICATION: A COMMITMENT BY LIÈGE PORT AUTHORITY

Liège Port Authority, in close collaboration with the Public Service of Wallonia (operational Directorate for mobility and the waterways (SPW DGO 2) is continuing its project with the same desire for transparent, calm and positive communication with local residents. In order to best inform all the citizens of the lower Meuse, Liège Port Authority is developing participatory communication in a spirit of partnership. This communication is transparent, objective and clear in order to inform regularly about the status of the work on the Liège Trilogiport.

A reference: www.portdeliege.be (the frequently updated website of Liège Port Authority).

LIÈGE TRILOGIPORT : ESSENTIAL FOR THE ECONOMIC RESTRUCTURING OF LIÈGE

On the occasion of the official launch, Mr Michel Firket, Administrateur-délégué of Liège Port Authority and First Deputy Mayor of the City of Liège, reiterated that “*Liège Trilogiport is essential for the economic restructuring of Liège and is therefore more than ever, a key project for the future of Hermalle-sous-Argenteau, the Lower Meuse, the regions of Liège and Wallonia*”.

LET'S LEARN TO TALK LOGISTICS!

Boats make it possible to carry various merchandise over very varied distances. However, boats can't deliver this merchandise directly to each door.

So it is necessary to combine several modes of transport (boat, train and/or lorries) to deliver then. That is port logistics!



AND THE ADDED VALUE?

In order to optimize the transport from emerging countries, products will be transported unfinished to our regions. As a result, these products need increasingly to be processed (packaging, assembly, addition of a notice, sorting, etc.) in warehouses situated in our ports or port areas. It is this type of activity that generates added value and creates new employment.